

PRAIRIE VIEW A&M UNIVERSITY PSYCHIATRIC NURSING ROTATION OFFERS NEW CHALLENGES, NEW OPPORTUNITIES

We are pleased to announce that Prairie View A&M University College of Nursing is the second nursing school and the first Bachelor's degree program to offer the Pathways psychiatric nursing rotation model. Thirteen students are currently enrolled for the Spring 2011 semester; Clinical Assistant Professor Sheila Harvin, is serving as the Prairie View faculty liaison and we welcome her to the Pathways Nursing Rotation Advisory Committee.

The rotation schedule at Prairie View is structured differently than the Coleman College calendar used in the first pilot rotation last summer. Instead of Coleman's 10 weeks of one-day a week clinic experience (for a total of 80 hours), the Prairie View students have 6 weeks of two days a

week (for a total of 96 hours) in clinical. This additional 16 hours in the clinics as well as the truncated timeline called for some major alterations to the previous design.

In addition, the Prairie View semester actually allows for two groups of students to complete the rotation during the semester, and thus our partners were asked to not only provide the rotation twice, but to work with twice as many students as they had previously.

These new schedule parameters meant that our hospital and clinic partners had to make some major adjustments in implementation details as well as agree to increase their time commitments to meet the Prairie View educational calendar. We were truly overwhelmed by the response to these chal-

lenges of our returning partners, Ben Taub General Hospital Emergency Psychiatric Center, the NeuroPsychiatric Center, Harris County Psychiatric Center, MHMRA Community Clinics, and our newest partner site, Methodist Hospital. And we are most grateful for our colleagues' commitment to this project and they and their staffs' flexibility and good will in making sure as many students as possible get to participate in the Pathways rotation experience.

The first group of seven Prairie View students concluded their rotation prior to spring break, and the next group of six will begin right after break.

Inside this issue:

<i>Four High Schools!</i>	2
<i>Panel Presentations</i>	2
<i>Coleman College</i>	3

"I am proud to be a networking partner in this collaboration. ...this new venture with the Prairie View students has sparked enthusiasm in my staff. To have the opportunity to share with the students and have them share back has been great."

*Jennifer Johnson,
Methodist Hospital*

High School Curriculum Expands into Four Schools



The Pathways High School Curriculum was adopted by four Houston area high schools for the 2010-2011 school year. They include Waltrip High School, Reagan High School, Lee High School and DeBakey High School for Health Professions (once again!). Teachers were trained at DeBakey and at Reagan by Sharon Wechter, and we are very pleased to report that the teachers in these two schools became comfortable enough to teach the Pathways lessons themselves.

Dr. Al-Mussawi, a 12th

grade teacher at DeBakey, was especially delighted to have the opportunity to provide her students with an introduction to mental health, mental illness and the behavioral health professions, and found the Pathways lesson format easy to follow and enjoyable to teach.

Dr. Dupre, teaching 9th grade at DeBakey, commented that the inclusion of a DVD showing interviews of different behavioral health professionals was very helpful to her students and enabled them to better understand the differences between

professions such as psychiatry, psychology and social work.

Ms. Crawford-Burley and Ms. Pickney of Reagan High School taught all the lessons to their 9th, 11th and 12th grade students, and they expressed their pleasure that their students had the chance to benefit from the Pathways curriculum.

As we will be only working with 12th graders at Lee, it will be interesting to evaluate if the Pathways curriculum can be shaped to fit different needs of different schools, and still prove beneficial.

Successful Professional Panel Presentations

Behavioral Health Professionals from Network organizations have been generously donating their time and energy to take part in panel presentations as part of the Pathways curriculum—specifically for 12th grade students. We are very grateful to:

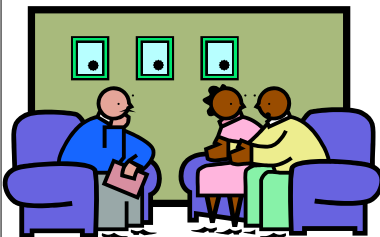
- * Deborah Drake (Social Work, Santa Maria Hostel),
- * Brittany Burch (Social Work, Montrose Counseling Center),
- * Carson Easley (Psychiatric Nursing, MHMRA),
- * Dr. Uche Chibueze (Psychology, MHMRA,

Forensics),
 * Dr. Sylvia Gonzalez (Psychiatry, Methodist),
 * Pegi Pung (Psychiatric Nursing, HCPC),
 * Dr. Jay Solomon (Psychology, private practice), and
 * Charlie McMurray Horton (Psychiatric Nursing, Ben Taub).

It was wonderful to see students at Reagan, Waltrip and DeBakey being totally captivated by the presentations, and so interested in the topic of Behavioral Health. Many asked questions demonstrating their interest in the speakers' professions and their daily lives.

Some were interested in how professionals deal with the regular stress of helping others, without it "bringing you down." Others showed concern about friends and family members suffering from mental illness and/or substance abuse, and wondered how they could be of help. One student wanted to know if anger management was an issue often faced in treatment, while another asked if you have to be "crazy" to seek help from the presenters.

We are looking forward to our last panel presentation at Lee High School.



Coleman College/HCC makes plans for Summer 2011 Psych Nursing Rotation

Plans are now underway with Coleman College faculty members, Dr. Tyrone Sharp and Dr Shana Westerfield, to replicate the offering of our Pathways psychiatric nursing rotation model during the Summer 2011 semester.

We are pleased to be able to hold a social gathering for students, to engage their interest in psychiatric nursing, and to present the new rotation model. We are inviting last year's students to be

participate in this event, to share their own unique experiences.

Students will be able to apply for participation in the Pathways model, and we plan to have eight students repeat the process this summer. In addition to evaluating their experiences, we will also be able to compare the Associate's degree (ADN) experience with the BSN (Bachelor's) experience.



The mission of the **Network of Behavioral Health Providers, Inc.** (the Network), a non-profit organization, is to serve its members, promote the advancement of effective behavioral health services, and advocate for people in need of supports in the greater Houston community. Network members represent all aspects of mental health and substance abuse service provision including public agencies and for-profit and non-profit private organizations providing the full range of behavioral health services from prevention to crisis intervention to long-term residential care and recovery management.

Executive Director: Marion Coleman, Ph.D.

Sharon L. Wechter,
Project Manager
Greater Houston AHEC
5959 West Loop South, Suite 560
Bellaire, TX 77401

Phone: 713.592.6411
Fax: 713.592.6415
E-mail: swechter@ghahec.org

The Greater Houston Area Health Education Center (AHEC) is a non-profit organization that seeks to improve the health of our population, especially the underserved, by creating partnerships with and among community and academic organizations.

MISSION

Improve the health of the communities we serve (Harris, Ft. Bend, Waller and Montgomery counties) by developing a quality health workforce and helping address health needs.

VISION

Optimal health for all people.

Executive Director:

Dana S. Smith, Ph.D., LMSW, MPA

**www.
ghahec.org**